

DEPARTMENT OF DESIGN AND CONSTRUCTION MANAGEMENT

**HOLLYWOOD**

**ON THE GO**

YOUR BOND DOLLARS AT WORK!

[www.hollywoodfl.org/OnTheGo](http://www.hollywoodfl.org/OnTheGo)

**PUBLIC MEETING  
TRAFFIC CALMING IMPROVEMENTS  
RECOMMENDATION**

**DISTRICT 3**

**August 16, 2023**

# TEAM INTRODUCTIONS



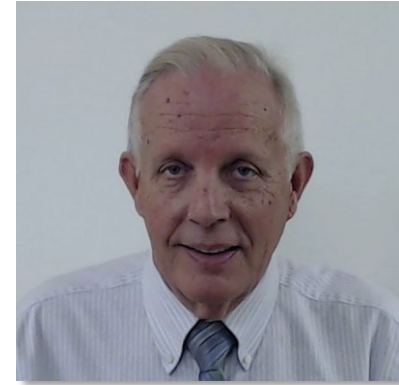
**Jose Cortes**

Director  
Design and Construction  
Management Department  
[Jcortes@hollywoodfl.org](mailto:Jcortes@hollywoodfl.org)  
954-240-7996



**Rudy Damas**

Project Manager  
Design and Construction  
Management Department  
[Rdamas@hollywoodfl.org](mailto:Rdamas@hollywoodfl.org)  
954-921-3410



**Rick Mitinger, P.E.**

Transportation Engineer  
Department of Development  
Services  
[Rmitinger@hollywoodfl.org](mailto:Rmitinger@hollywoodfl.org)  
954-921-3990

## Goal of the Meeting:

- Introduce the topic of traffic calming and its importance within the City
- Discuss proposed traffic calming improvements for a safer and more efficient city.
- Solicit feedback from the public as to what they envision for the project.
- Answer questions the public has regarding the project.







**GOB Budget \$ 2,189,118**

Traffic Improvements to create safer and more livable neighborhoods by implementing traffic calming devices in all Districts.

**ATKINS**

## Traffic Calming Master Plan Phase 1

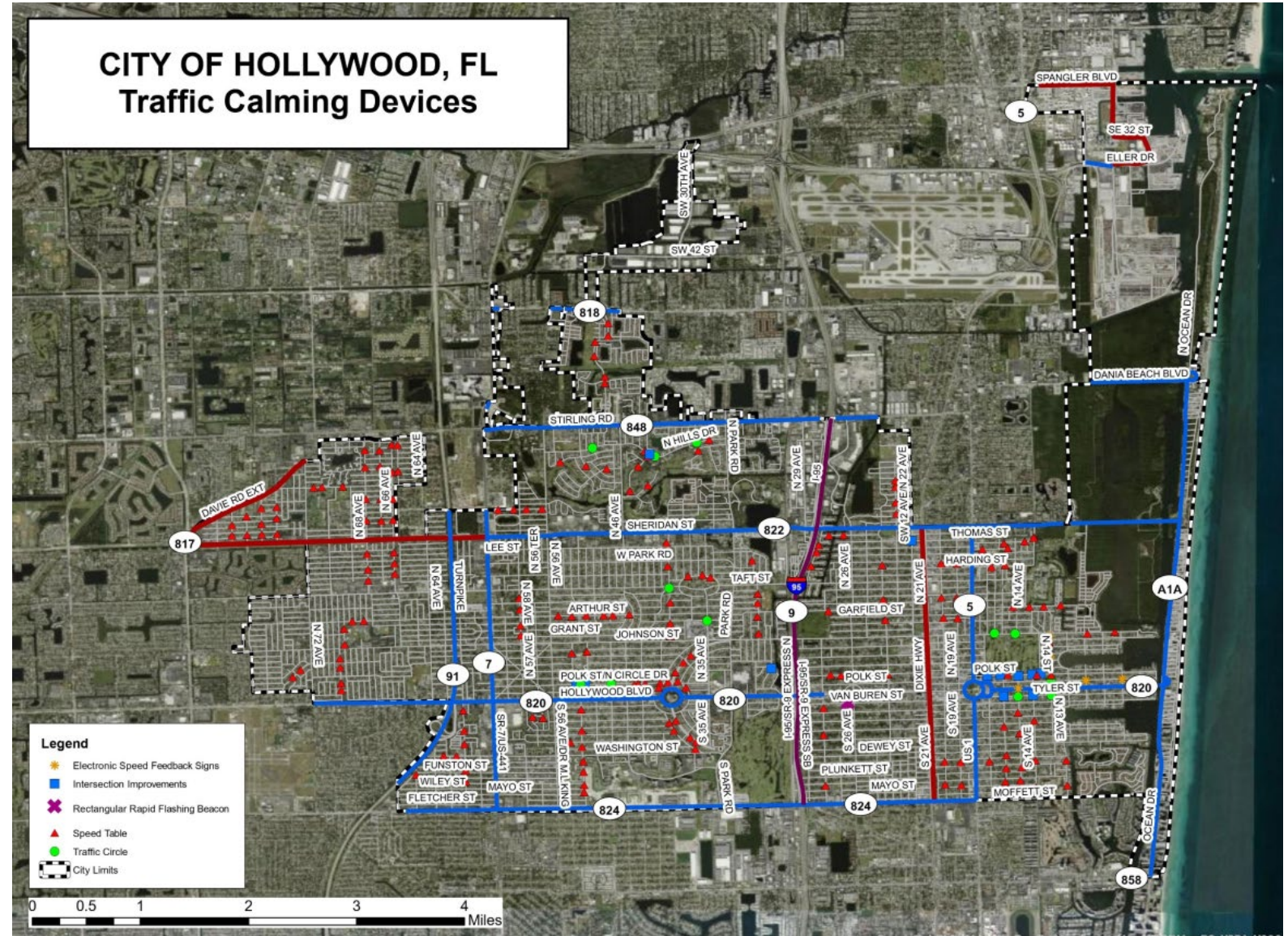
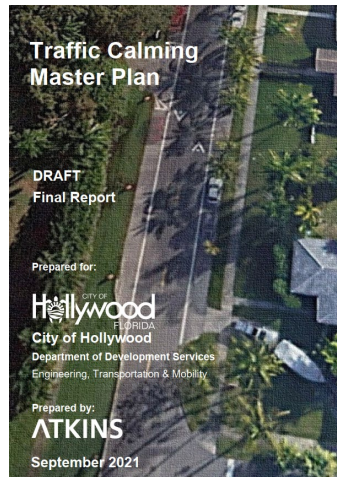
Atkins Completed and provided an update of the Traffic Calming Master Plan status to the City Commission on July 2, 2021. The master plan included proposed traffic calming solutions for all districts within the City.



# General Project Overview: project background

Master plan developed by  
Atkins in 2021

- Existing traffic calming devices
- Field observations
- Traffic counts
- Traffic warrants
- Future phases considered

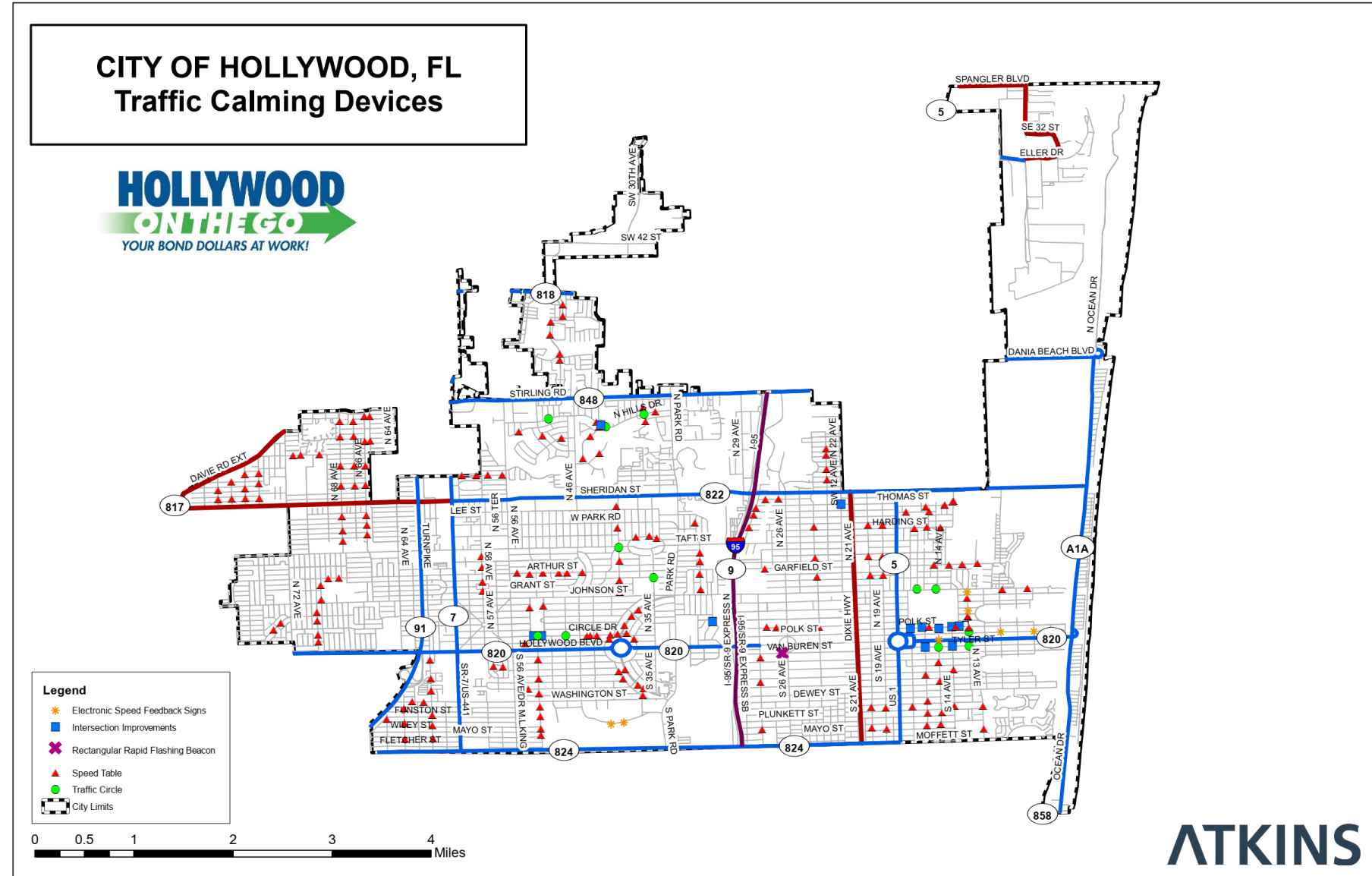




# General Project Overview: project background

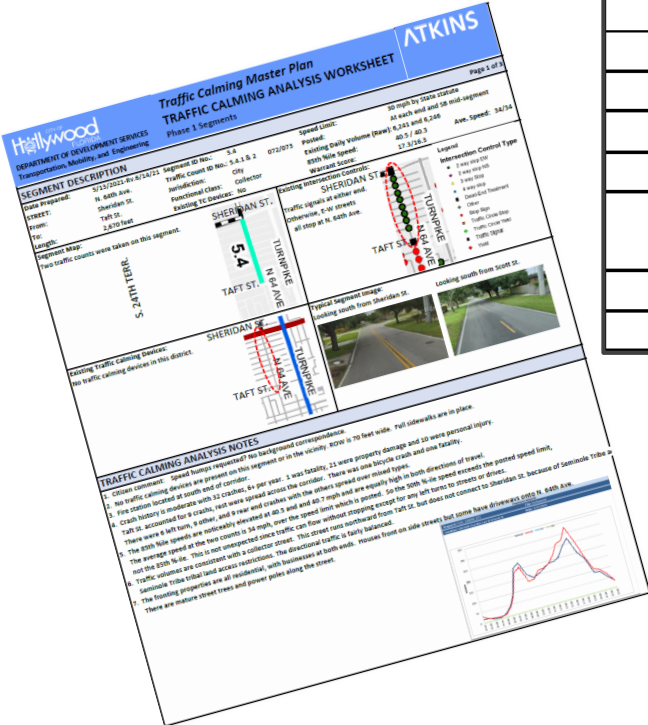
Over the years, the city has installed over 252 traffic calming devices, summarized as follows, and as shown

- Speed tables : 223 locations
- Traffic Circles: 11 locations
- Intersection improvements: 12 locations
- Electronic Speed feedback signs
- Rectangular rapid flashing beacons: 1 location
- Intersection Choker: 1 location



# DISTRICT 3 TRAFFIC CALMING RECOMMENDED LOCATION- PHASE 1

CITY OF HOLLYWOOD Traffic Calming Plan - Phase 1 Recommendations Summary - District 3						
Commission District	District Site ID Number	Segment Number	STREET	Begin and End Limits	Collector or Local	Proposed Traffic Calming Devices
3	1	3.1	N. 40th Avenue	W. Park Rd. to Sheridan St.	L	1 roundabout
3	4	3.4	Lincoln Street	N. 24th St. to N. 26th St.	L	3 speed tables
3	6	3.6	N. 28th Avenue	Hollywood Bl. to Johnson St.	C	4 Electronic Speed Feedback signs
3	8	3.8	N. 32nd Court	Taft St. to Coolidge St.	L	2 speed tables
3	9	3.9	N. Highland Drive	Lincoln St. to Johnson St.	L	Dead End treatment (closure) near Johnson St.
3	10	3.10	N. Highland Drive	Fillmore St. to Lincoln St.	L	No action for now, pending impact of street closure at Johnson St. (item above)
3	11	3.11	Polk Street	N. 26th Ave. to N. 28th Ave.	L	2 speed tables
3	13	3.13	N. 37th Avenue	W. Park Rd. to Sheridan St.	L	2 speed tables



## PHASE 1 Recommended improvements:

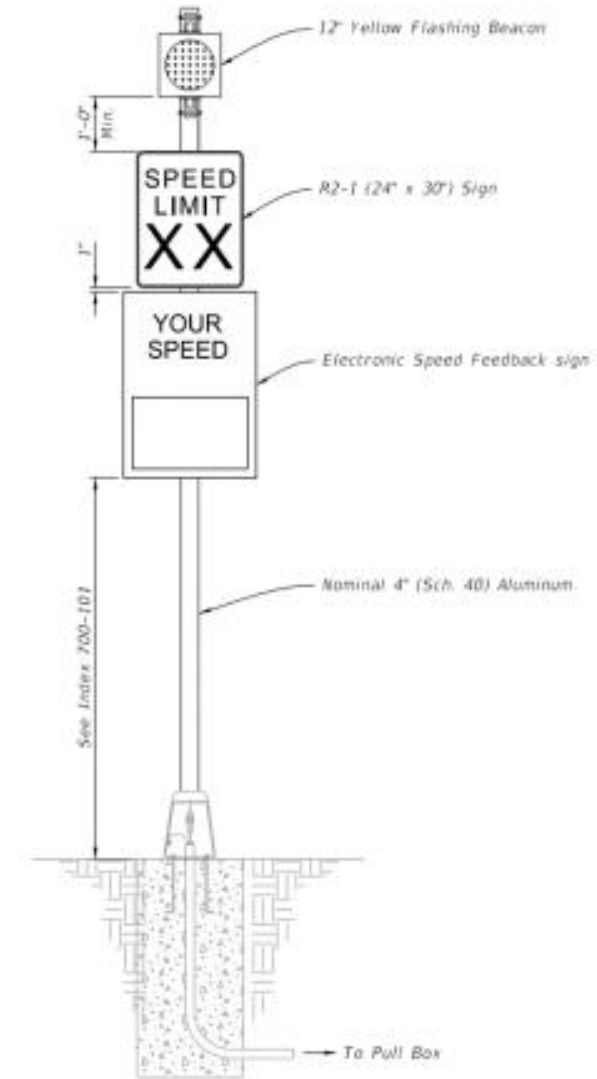
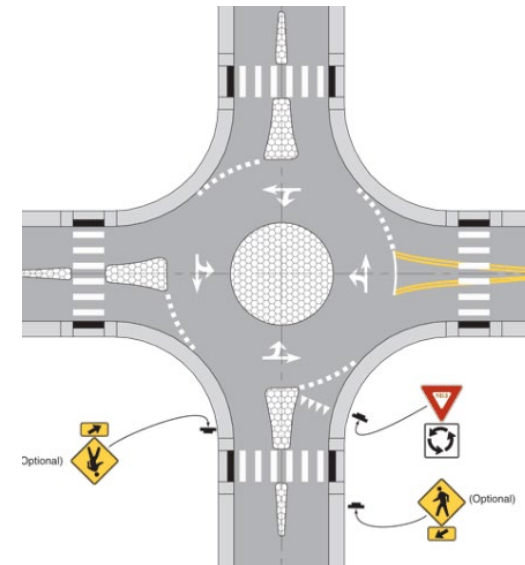
- Speed tables 9
- Roundabouts 1
- Electronic speed feedback signs (COH) 4
- Dead-End Treatment 2

**TOTAL 16**

# Scope of Work

3 phases of design (60%, 90% and 100%)

- Speed tables
- Roundabouts
- Electronic Feedback signs
- Dead-End





## TRAFFIC CALMING DEVICES RECOMMENDATION

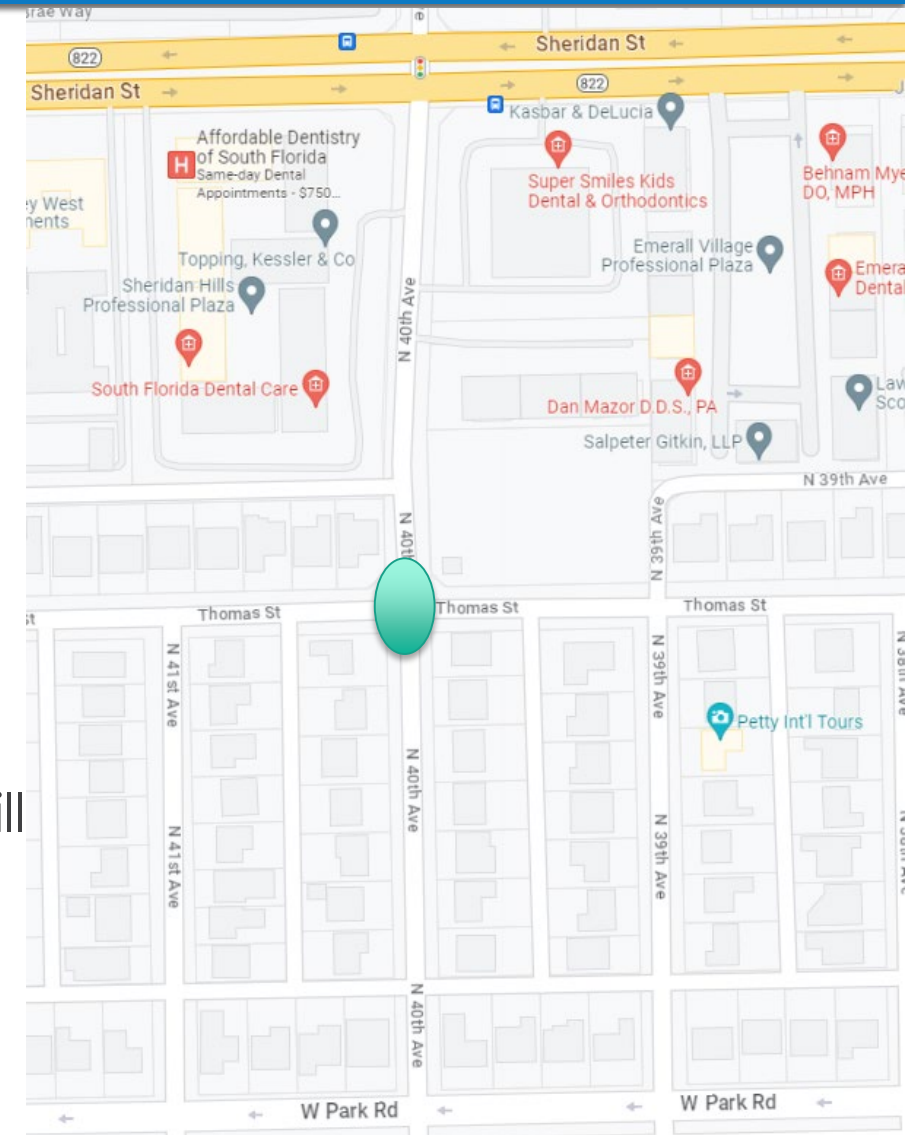
### Segment Map

Traffic count was taken just south of Thomas St., approximately midway between the two speed humps on N. 40th Ave.



- Install a roundabout intersection
- Effect on vehicles speeds will be significant

Note: All traffic calming device locations shown are preliminary.

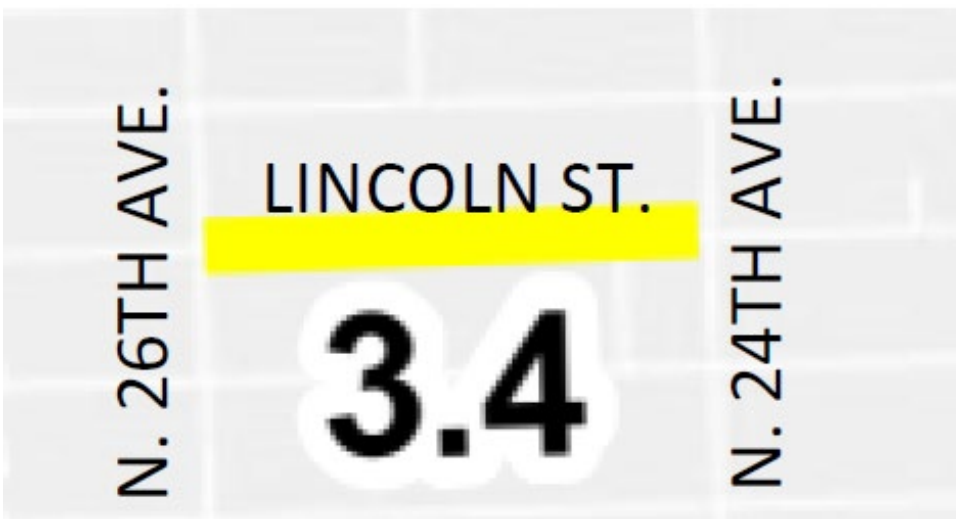


## TRAFFIC CALMING DEVICES RECOMMENDATION

Install 3 speed tables using the spacing shown above. This action will reduce the speed profile and deter any cut-through traffic contributing to the existing excess speed.

### 3 speed tables

N. 26th Ave. to 1st speed table	270 ft.
1st speed table to 2nd speed table	365 ft.
2nd speed table to 3rd speed table	520 ft.
3rd speed table to N. 24th Ave.	390 ft.



Note: All traffic calming device locations shown are preliminary.



## TRAFFIC CALMING DEVICES RECOMMENDATION

Install 2 Electronic speed feedback signs

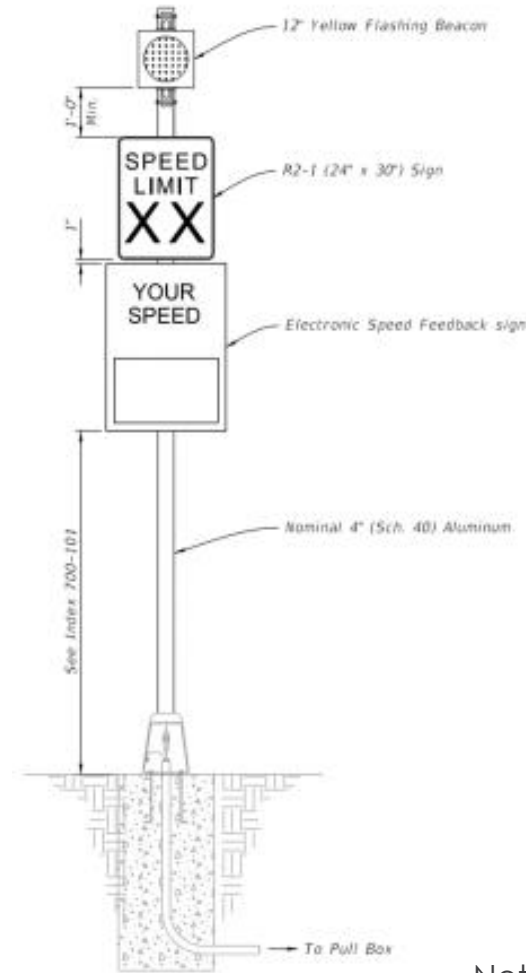
### 1. Southbound

80 feet north of centerline of Taylor

### 2. Northbound

35 feet north of centerline of Polk St.

The signs are situated on the southern half of the segment where there is more distance away from the school zone; they should help reinforce the posted school zone speed limit from Fillmore St. to north of Pierce St.



Note: All traffic calming device locations shown are preliminary.



## TRAFFIC CALMING DEVICES RECOMMENDATION

### Recommendation

Install two speed tables at the following locations:

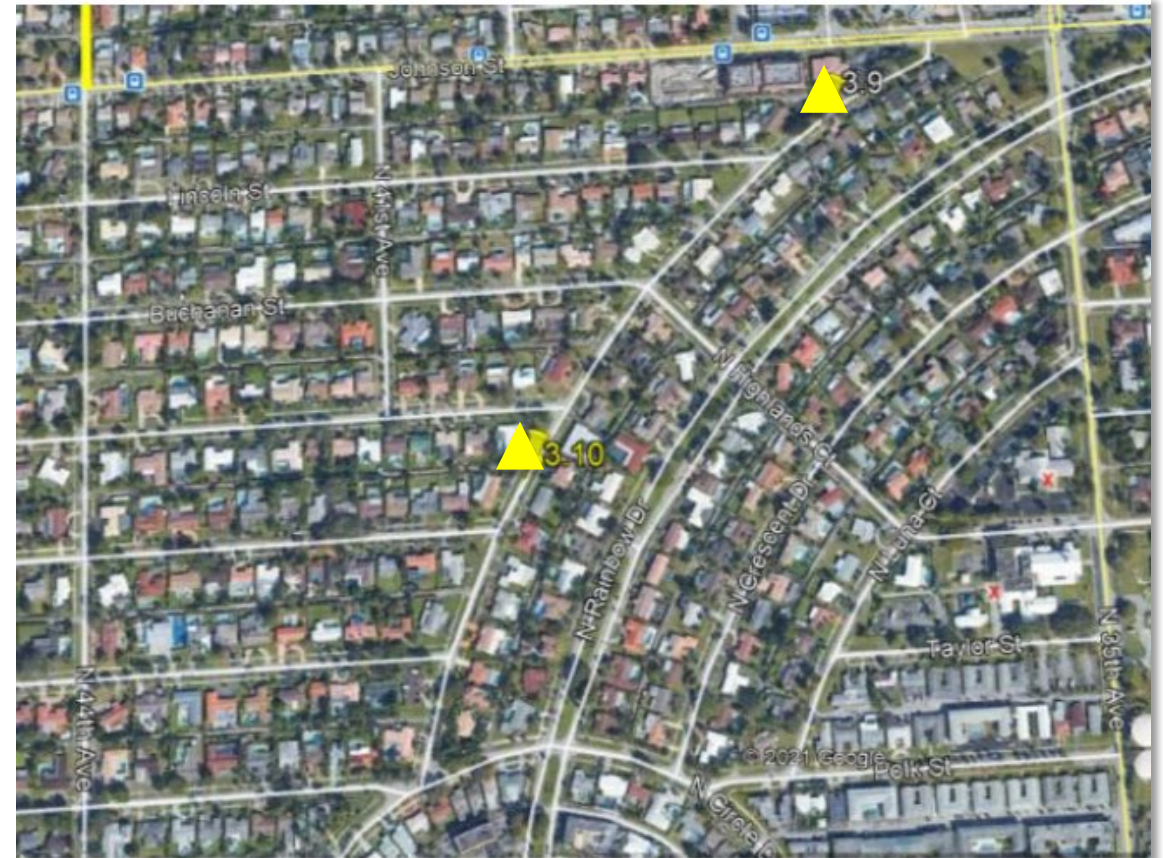
- A. First speed table:** 110 feet (speed table centerline) north of centerline of Harding St.
- B. Second speed table:** 90 feet (speed table centerline) north of centerline of Wilson St.



Note: All traffic calming device locations shown are preliminary.

## TRAFFIC CALMING DEVICES RECOMMENDATION

Closure of NB N. Highland Dr. is proposed in Segment 3.9 to the north



Note: All traffic calming device locations shown are preliminary.



## TRAFFIC CALMING DEVICES RECOMMENDATION

### Recommendation

1. Install standard flattop speed table 440 feet west of brick crosswalk at N. 26th Ave.
2. Speed table at east location approx. 345 feet east of stop bar at N. 28th Avenue.



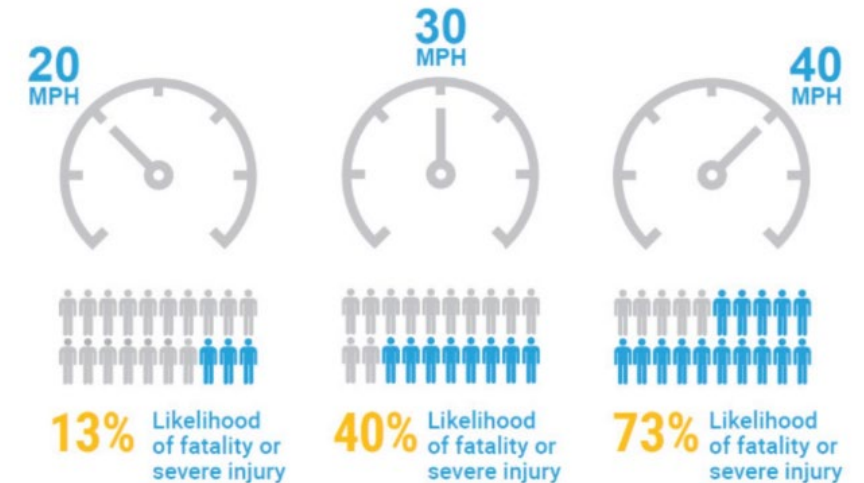
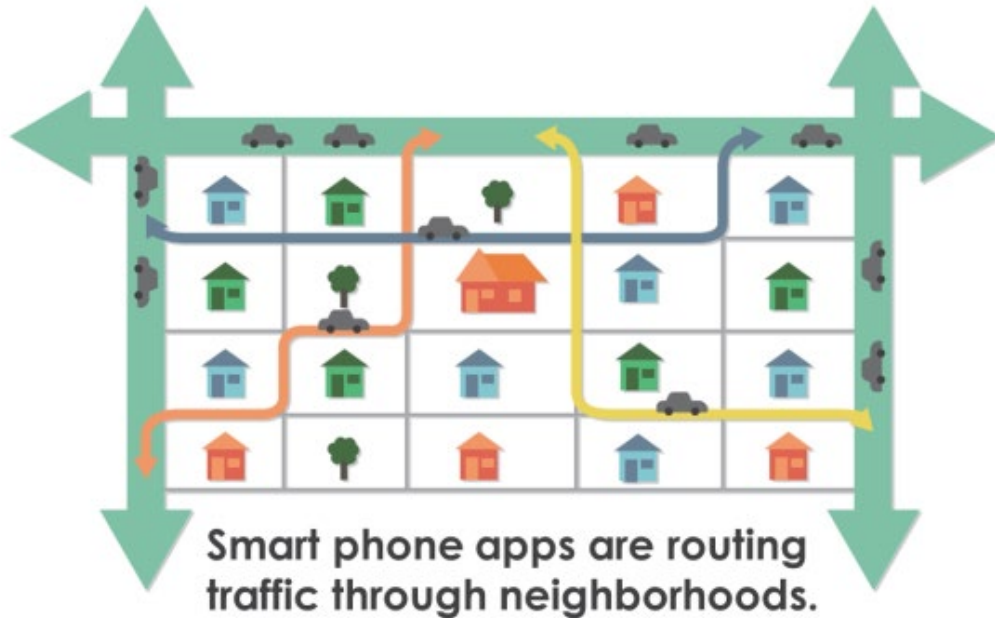
Note: All traffic calming device locations shown are preliminary.



# General Project Overview: purpose and need

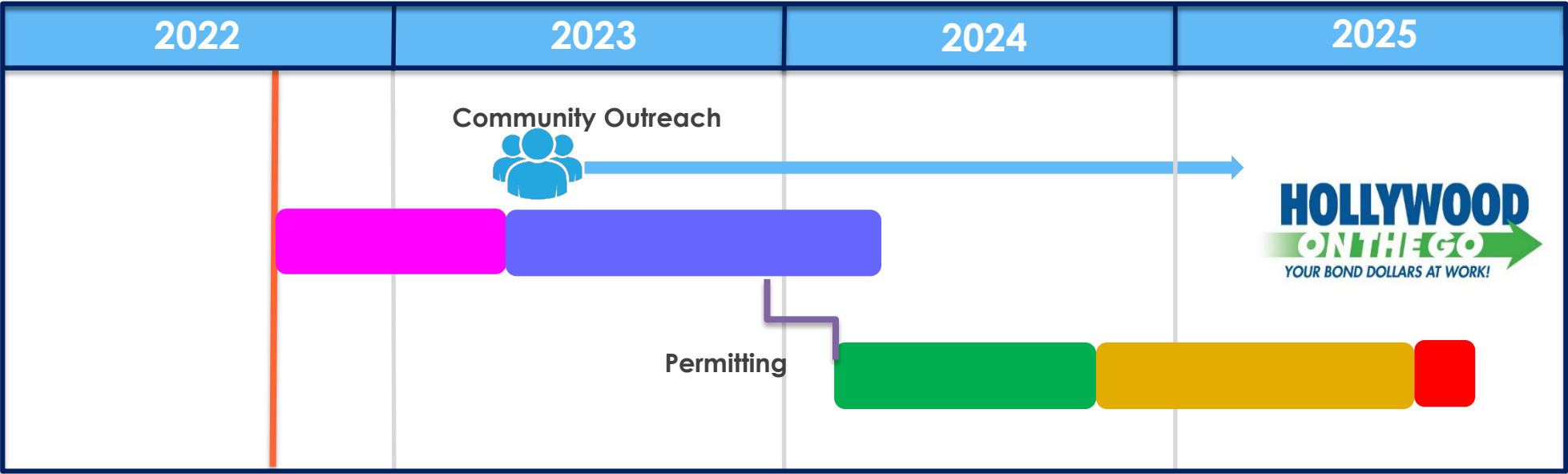
## Make Hollywood neighborhood streets safer!

- Reduce speeding
- Discourage cut-through traffic
- Promote safer local streets



# ESTIMATED IMPLEMENTATION TIMELINE

## Traffic Calming Improvements



● Planning ● Design Procurement ● Design/Permitting ● Procurement ● Construction ● Closeout

A detailed street map of the Hollywood Hills Elementary School area in Hollywood, Florida. The map shows a grid of streets including W Park Rd, Harding St, Coolidge St, Wilson St, Roosevelt St, McKinley St, Cleveland St, Arthur St, Hayes St, and Grant St. North-south streets include N 48th Ave, N 47th Ave, N 45th Ave, N 44th Ave, N 43rd Ave, N 41st Ave, N 39th Ave, N 37th Ave, N 35th Ave, N 33rd Ave, N 31st Ave, N 30th Rd, and N 31st Ct. A yellow highlighted area is labeled 'District 3'. Other landmarks include 'Hollywood Hills Elementary School' and 'Rotary Park'.

# QUESTIONS

# AND

# ANSWERS



# THANK YOU FOR YOUR TIME



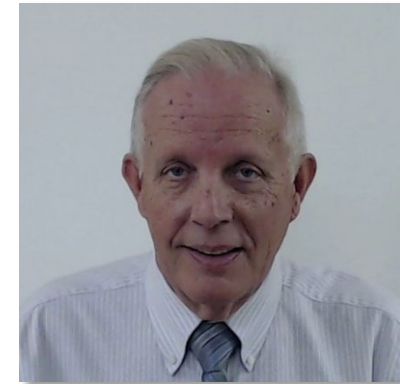
**Jose Cortes**

Director  
Design and Construction  
Management Department  
[Jcortes@hollywoodfl.org](mailto:Jcortes@hollywoodfl.org)  
954-240-7996



**Rudy Damas**

Project Manager  
Design and Construction  
Management Department  
[Rdamas@hollywoodfl.org](mailto:Rdamas@hollywoodfl.org)  
954-921-3410



**Rick Mitinger, P.E.**

Transportation Engineer  
Department of Development  
Services  
[Rmitinger@hollywoodfl.org](mailto:Rmitinger@hollywoodfl.org)  
954-921-3990